

Gorman-Redlich Mfg. Co. are the experts with more than **35 years of excellence** in broadcast alerting.

Our CRW-S weather radio is a broadcast-quality receiver that sets the industry standard for configurability and interface options. This is the perfect alerting solution for schools, industrial facilities, campgrounds, apartment complexes, amateur radio repeaters, and broadcast radio stations.

The CRW-S can receive, process and filter alerts from US NOAA National Weather Radio and Weather Radio Canada sources. 12V battery backup terminals let you keep receiving emergency information in the event of power loss.

Units ship pre-configured for your installation, including location and selected events. Easily integrates with existing public-address (PA) systems, electronic signboards, visual alerts, and other external equipment for mass notification. Audio output can also be used as an input for broadcast EAS.

Received alerts are stored on-board and can be replayed at the touch of a button and radio reception can be de-muted at the touch of a button to monitor weather forecast information.

Install a Gorman-Redlich CRW-S today and protect life and property!

▶ **CRW-S Weather Radio**

▶ **BENEFITS**

- FCC certified
- IU (1.75-in) Equipment footprint
- Ships pre-configured for your installation
- No "Support Sunset"

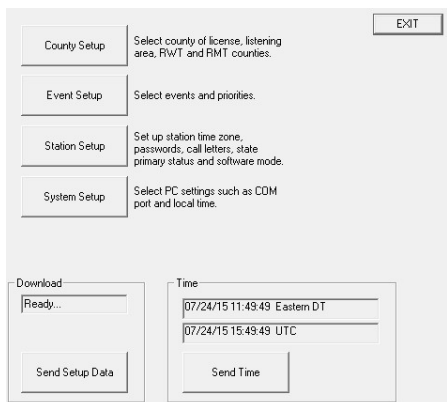
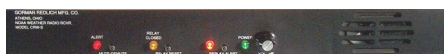
▶ **FEATURES**

- Highly sensitive and selective receiver
- US & Canadian weather radio compatible
- Available as 19" rack-mount or desktop unit
- User programmable via software
- Last message playback
- Visual alert notification
- 12VDC Battery Backup Terminals
- Serial Alert Logging
- Multiple peripheral interface options including signboards, EAS, PA systems, and more
- Remotely controllable with optional panel
- Designed and **MADE IN USA**



Phone: 740-593-3150
www.Gorman-Redlich.com

Gorman-Redlich Mfg. Co.
257 W Union St
Athens, OH 45701



▶ Specifications & Features

HARDWARE

Height	1 Rack Unit—1.75 in
Width	Standard 19 inch rack-mount or 14" desktop
FCC ID	MVZCRW-S
Logging	Serial RS232 (to printer or logging software)
Power	15VDC 600mA; 12V Auxiliary Backup
Sensitivity	.28 μ V / 12 dB
Spurious Response	-60 dB max
Frequencies	162.40, 162.425, 162.45, 162.475, 162.50, 162.525, 162.55 (dipswitch selectable)
Antenna	50 Ω F-type connector. 1/4 λ whip or directional antennas sold separately.
Remote Control	Mute/de-mute, relay reset (with optional panel)
Signboard Support	Serial RS232 "Alpha Protocol"
Relay Interface	Dry contact closure on alert processing
Audio Output	600 Ω alert, 600 Ω continuous; 1V P-P 0 dBm
Configuration	Via PC software. Ships pre-configured for your coverage locations, events, and response type.
Support Lifecycle	No "Support Sunset"