

Gorman-Redlich Mfg. Co. are the experts with more than 35 years of excellence in broadcast alerting.

Our EASI (Emergency Alert System) equipment has been deployed in broadcast radio installations for two decades, providing a reliable, affordable solution for terrestrial radio-based alerting.

EASI equipment is based on our proven Emergency Alert System platform. These units accept up to six alert source audio inputs which will operate over levels .from 0.14V to 2V RMS.

The EASI TV/CG unit seamlessly integrates with the Gorman-Redlich CAP-DEC I Common Alerting Protocol (CAP)-to-EAS universal intermediary device, allowing it to receive emergency alert messages from over-the-air sources such as NOAA Weather Radio or from online alert services such as FEMA/IPAWS (US) and Pelmorex (Canada).

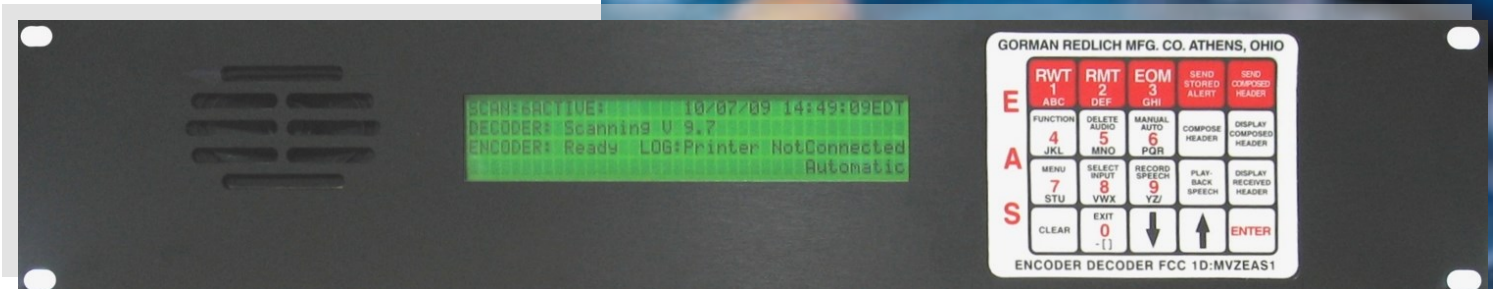
▶ EASI Encoder/Decoder

BENEFITS

- FCC Part II certified EAS encoder/decoder
- 2U (3.5-in) Equipment footprint
- Ships pre-configured for your station
- No "Support Sunset"

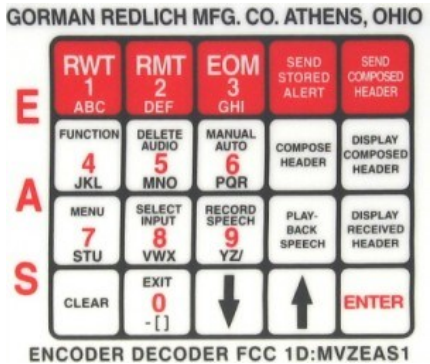
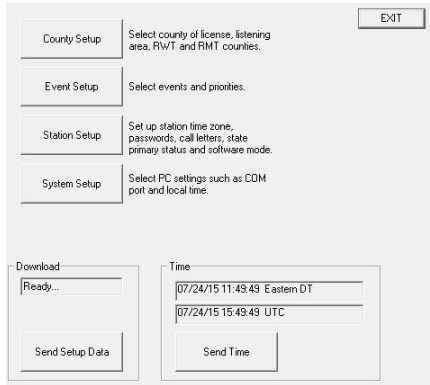
FEATURES

- Supports six alert source audio inputs
- User programmable via software/front panel
- Generate alerts from front panel, optional telephone interface
- Highly Configurable
- Multiple logging options
- Interfaces with CAP-DEC I for Common Alerting Protocol support
- Meets 6th R&O requirements (v9.8+)
- Large backlit front-panel display
- Designed and **MADE IN USA**



Phone: 740-593-3150
www.Gorman-Redlich.com

Gorman-Redlich Mfg. Co.
 257 W Union St
 Athens, OH 45701



▶ Specifications & Features

HARDWARE

Height	2 Rack Unit—3.5 in
Width	Standard 19 inch Rack Mount
Display	4x40 character backlit LCD
Audio Inputs	6 channel, wire terminals, transformer isolated
FCC ID	MVZEAS1—Part II certified
Logging	Parallel, Serial (to printer or logging software)
Power	9VDC IA
Alert Generation	Via front panel, optional phone interface. One-button RWT and RMT.
CAP Support	With optional Gorman-Redlich CAP-DEC I
Security	Technician and Operator password protection
Peripheral Support	External character generator, serial/parallel printers, PC logging, signboard
Alert Forwarding	Automatic or Manual
Conformity	Current through 6th R&O with v9.8+
Configuration	Via front panel or PC software. Ships pre-configured for your station.
Support Lifecycle	No “Support Sunset”



Phone: 740-593-3150
www.Gorman-Redlich.com

Gorman-Redlich Mfg. Co.
257 W Union St
Athens, OH 45701