

INSTRUCTION MANUAL

Security Certificate Installation

For CAP-DEC1 Common Alerting Protocol Intermediary Device
XML Digital Signature Verification
v2.76.3+

Document Rev. 1.02

Document Date: 2.19.2024



GORMAN REDLICH

257 West Union St.

Athens, Ohio 45701

Ph: 740-593-3150

www.Gorman-Redlich.com

FCC Part 11.56(c) requires EAS participants to reject CAP messages that do not contain a valid digital signature. Gorman-Redlich CAP-DEC 1 Universal Intermediary Devices with software v2.76.3 and above validate digital signatures by ensuring both that the message contained the CAP data is correctly signed by the embedded certificate as well as validating that the embedded certificate, and the chain of certificates through which it was issued, is trusted as issued by official Federal Government Sources.

From time to time, such certificates expire and must be replaced by new certificates.

Installation of these certificates is simple and can be performed by the end-user, although Gorman-Redlich technicians are happy to assist in their installation by remote connection.

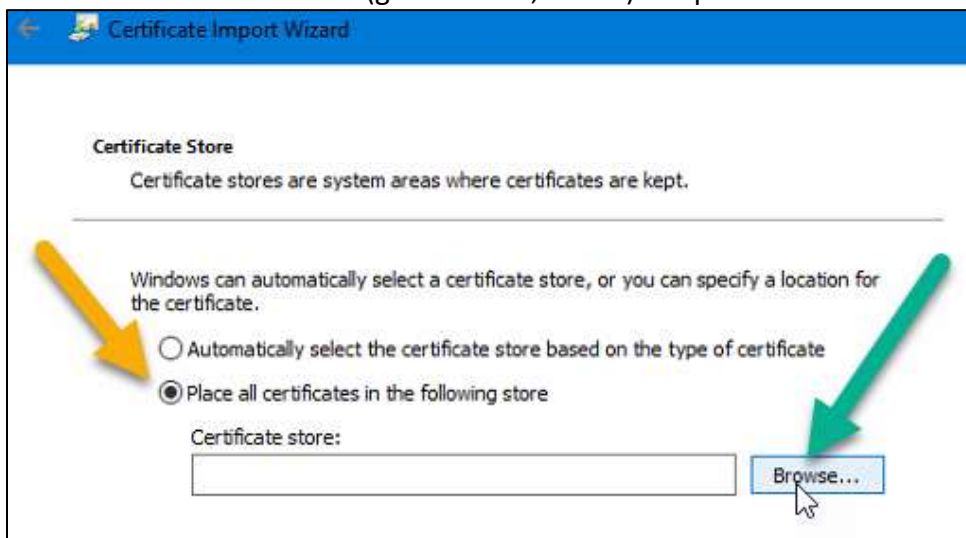
Certificate Installation

- 1) Download and unzip (if necessary) the appropriate certificate bundle from the downloads section of the Gorman-Redlich website.
- 2) If the certificate files were not downloaded directly to the CAP-DEC1 unit, move them from the download location to the CAP-DEC1 using a USB thumb drive or remote access connection.
- 3) Right-click the certificate file (generally a .CER or .P7B file type) and choose “Install Certificate...” button.



In the resulting “Certificate Import Wizard” interface, click the “Next” button to begin importation.

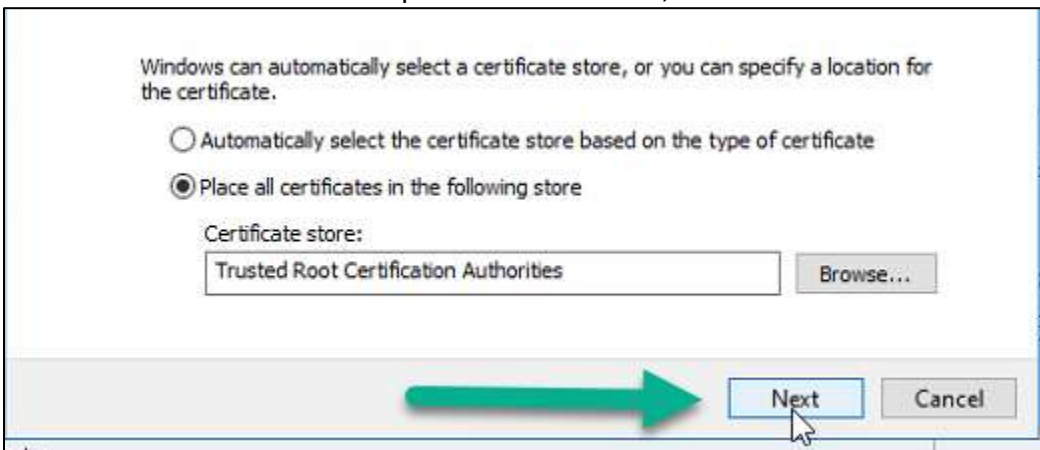
- 4) Select the “Place all certificates in the following store” radio button (yellow arrow, below) and then click the “Browse...” button (green arrow, below) to open the “Select Certificate Store” window.



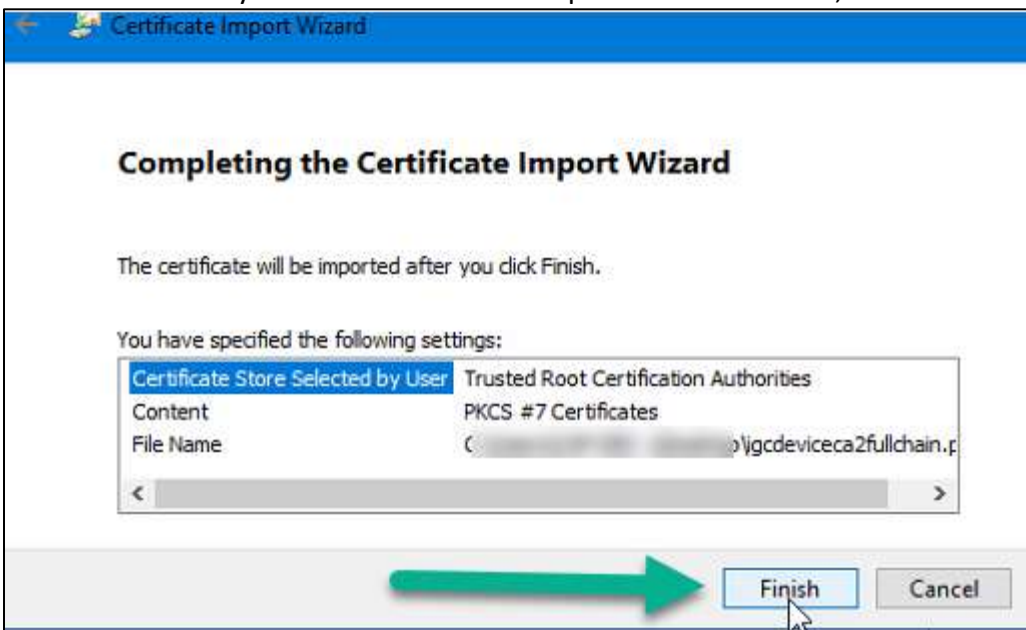
- 5) Click “Trusted Root Certificate Authorities” to select it and then click “OK” to return to the Certificate Import Wizard window.



- 6) Once back at the Certificate Import Wizard window, click “Next.”



- 7) The final screen of the Certificate Import Wizard will display the certificates being installed and the store to which they will be installed. To complete the installation, click “Finish.”





GORMAN REDLICH
257 West Union St.
Athens, Ohio 45701
Ph: 740-593-3150
www.gorman-redlich.com